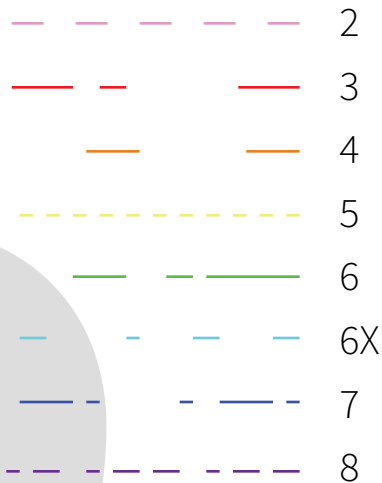


Coral + co.

Knot Bow
Romper
sizes 2t - 8

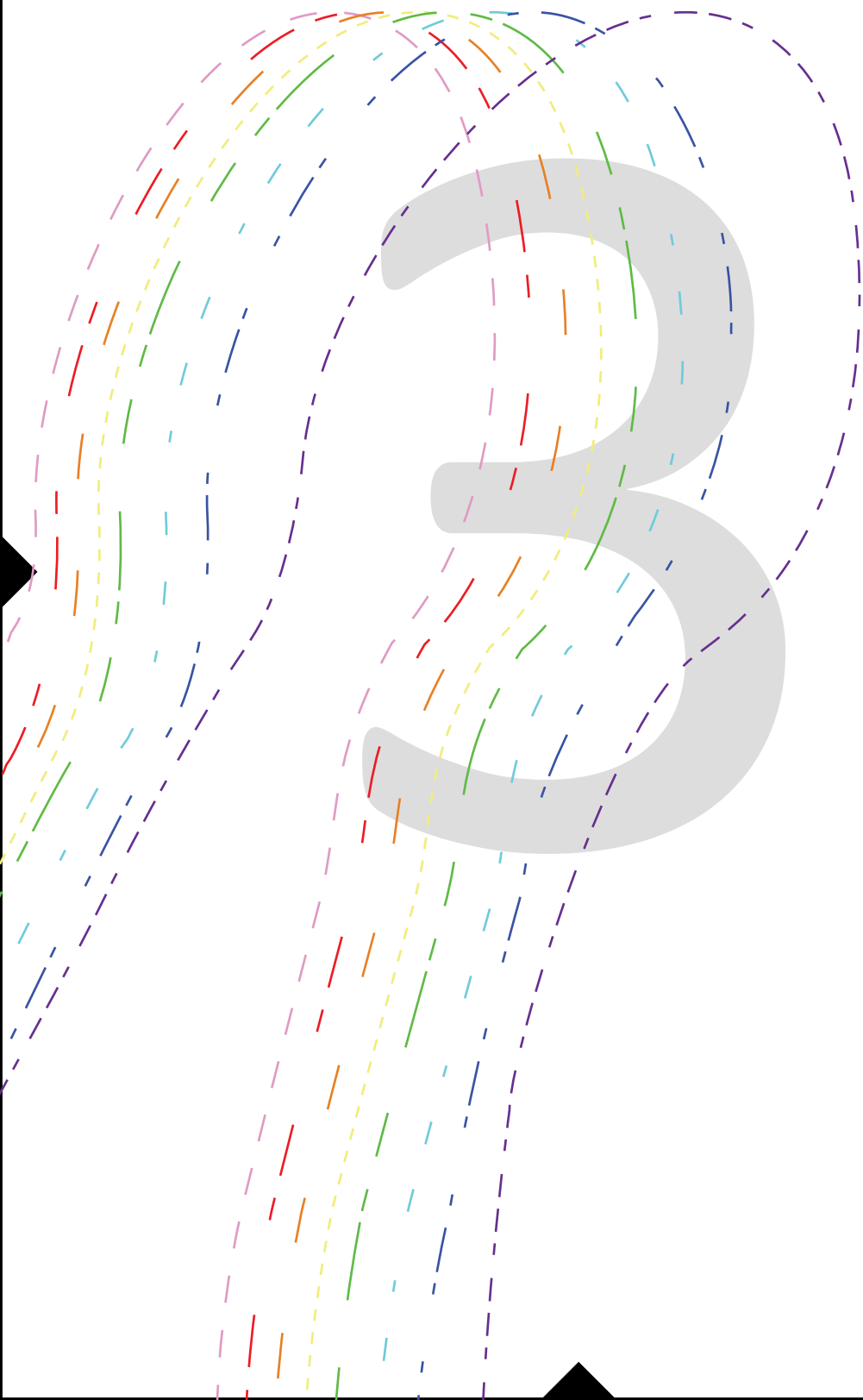
1 in"

SIZE KEY

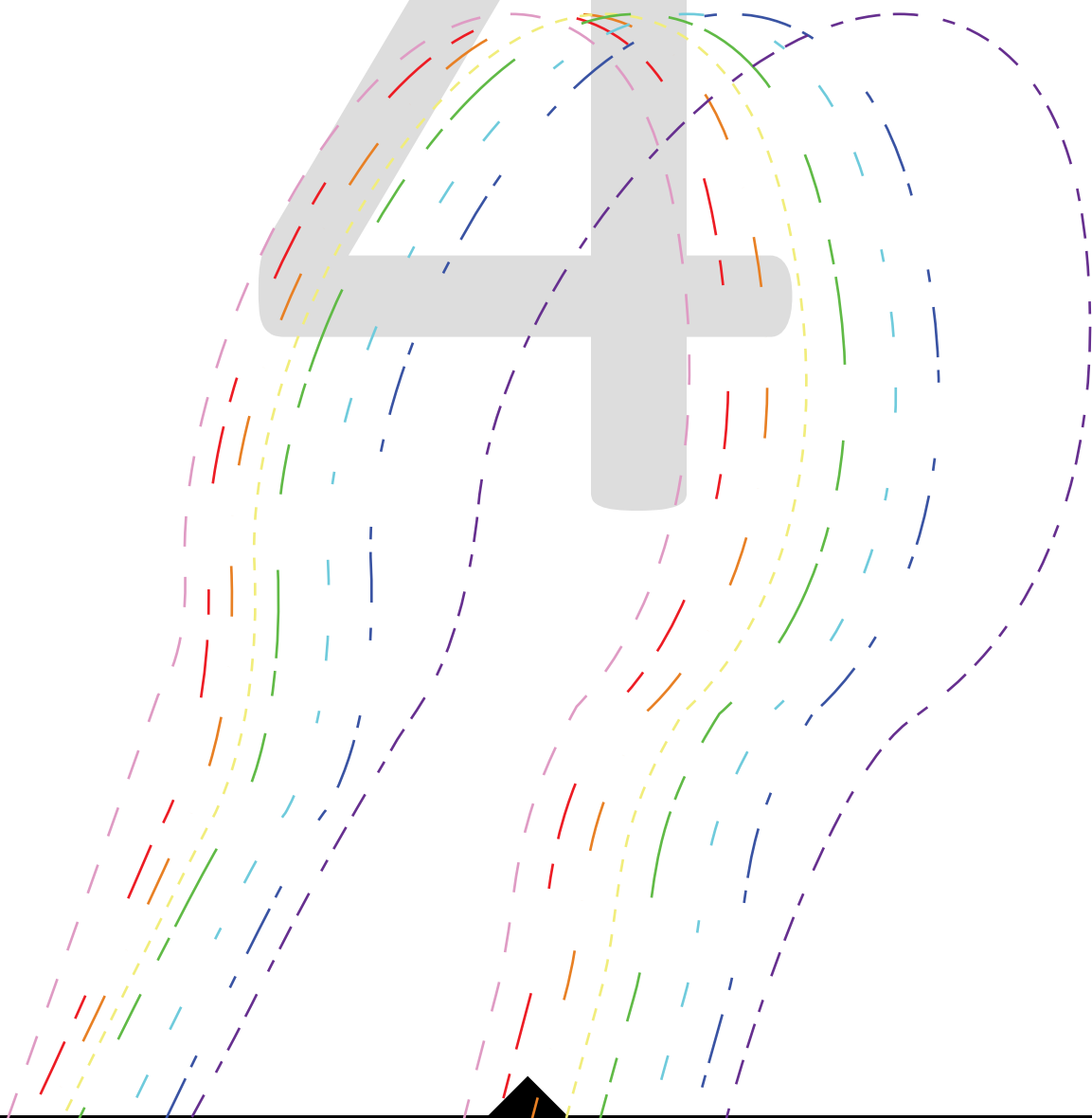


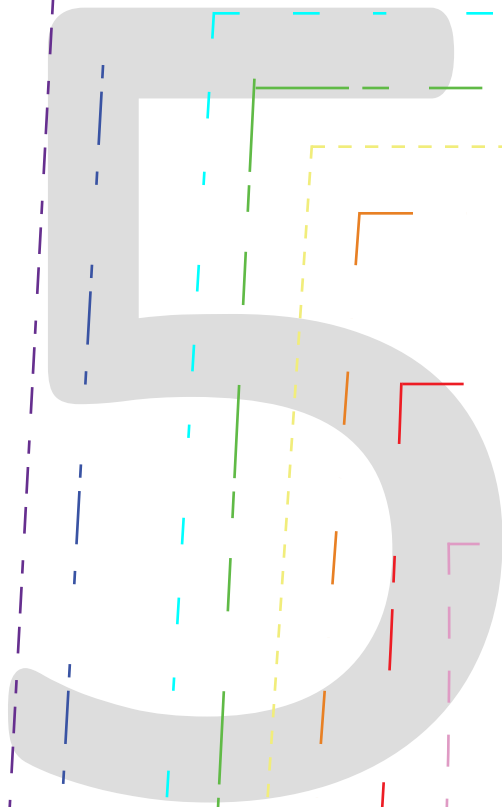
For detailed measurements,
see the accompanying PDF.

Size	Waist Elastic
2	18"
3	18.5"
4	19"
5	19.5"
6	20"
6x	20.5"
7	21"
8	21.5"

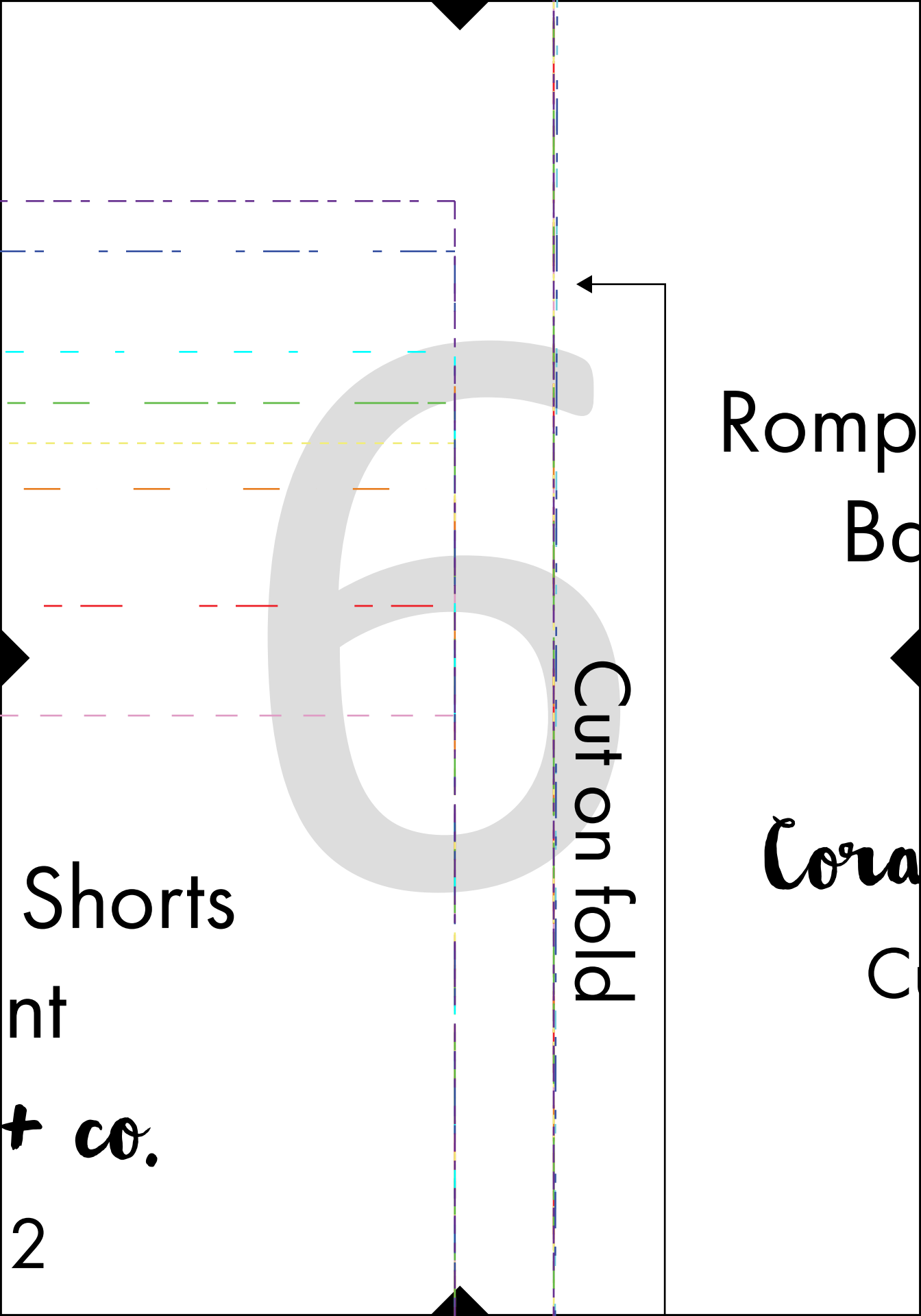


4





Romper
From
Coral
Cut



Romp
Bo

Cora
C

Cut on fold

Shorts

nt

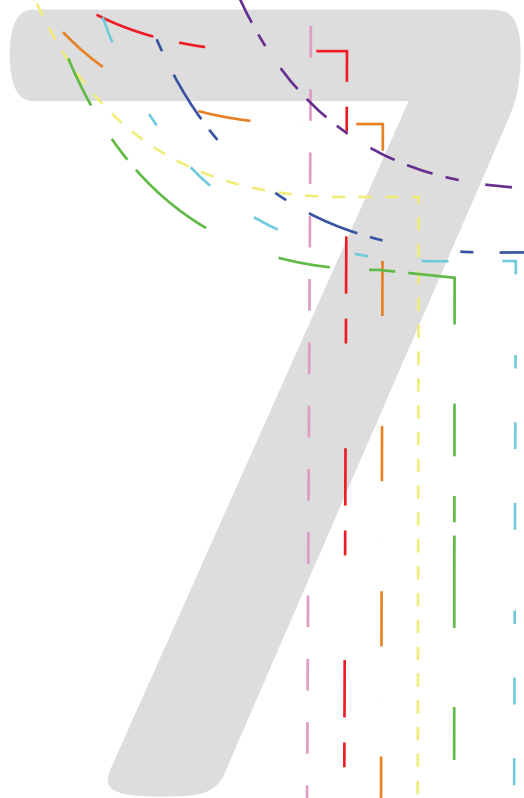
+ co.

2

er Top
ck

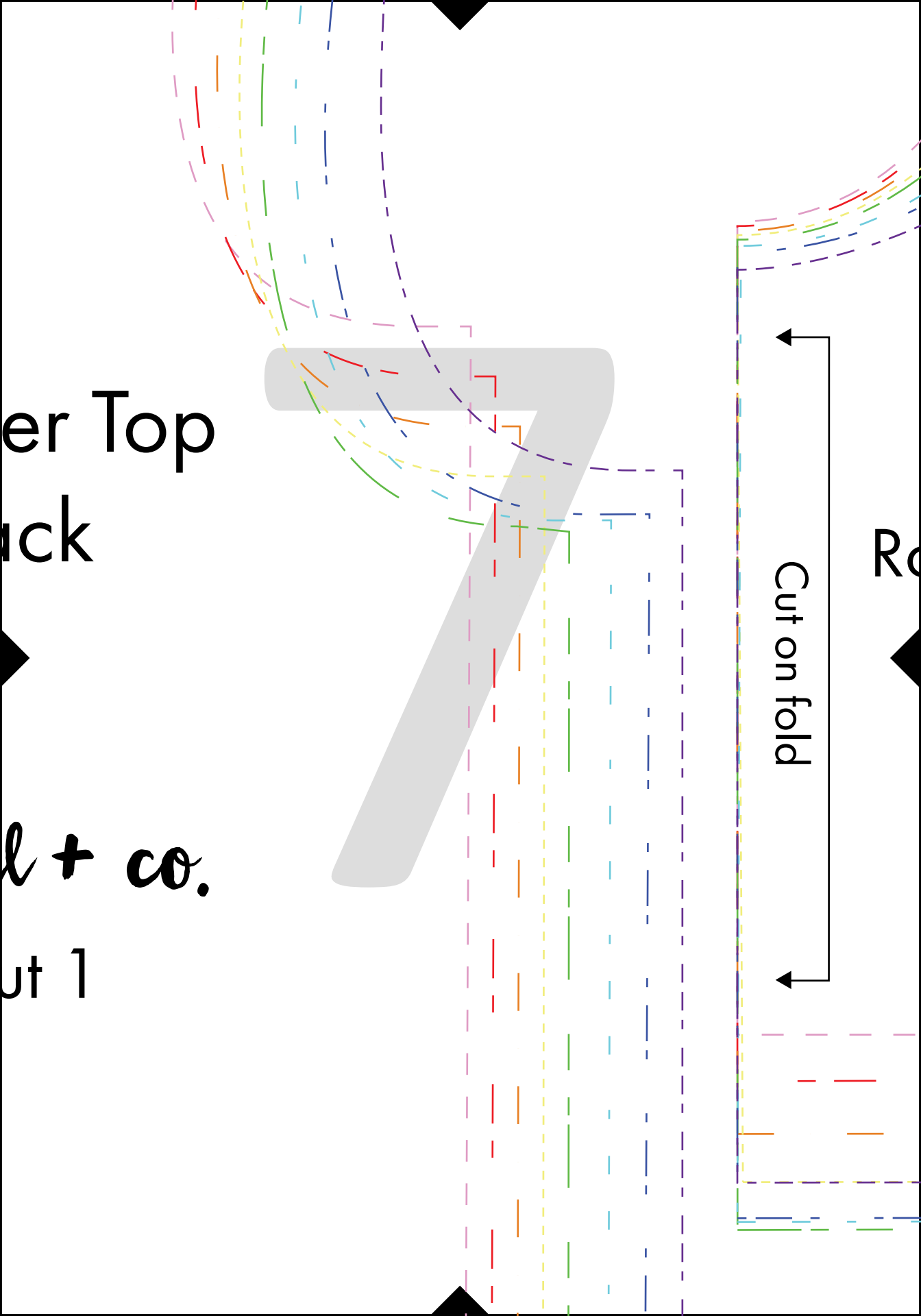
l + co.

ut 1



Cut on fold

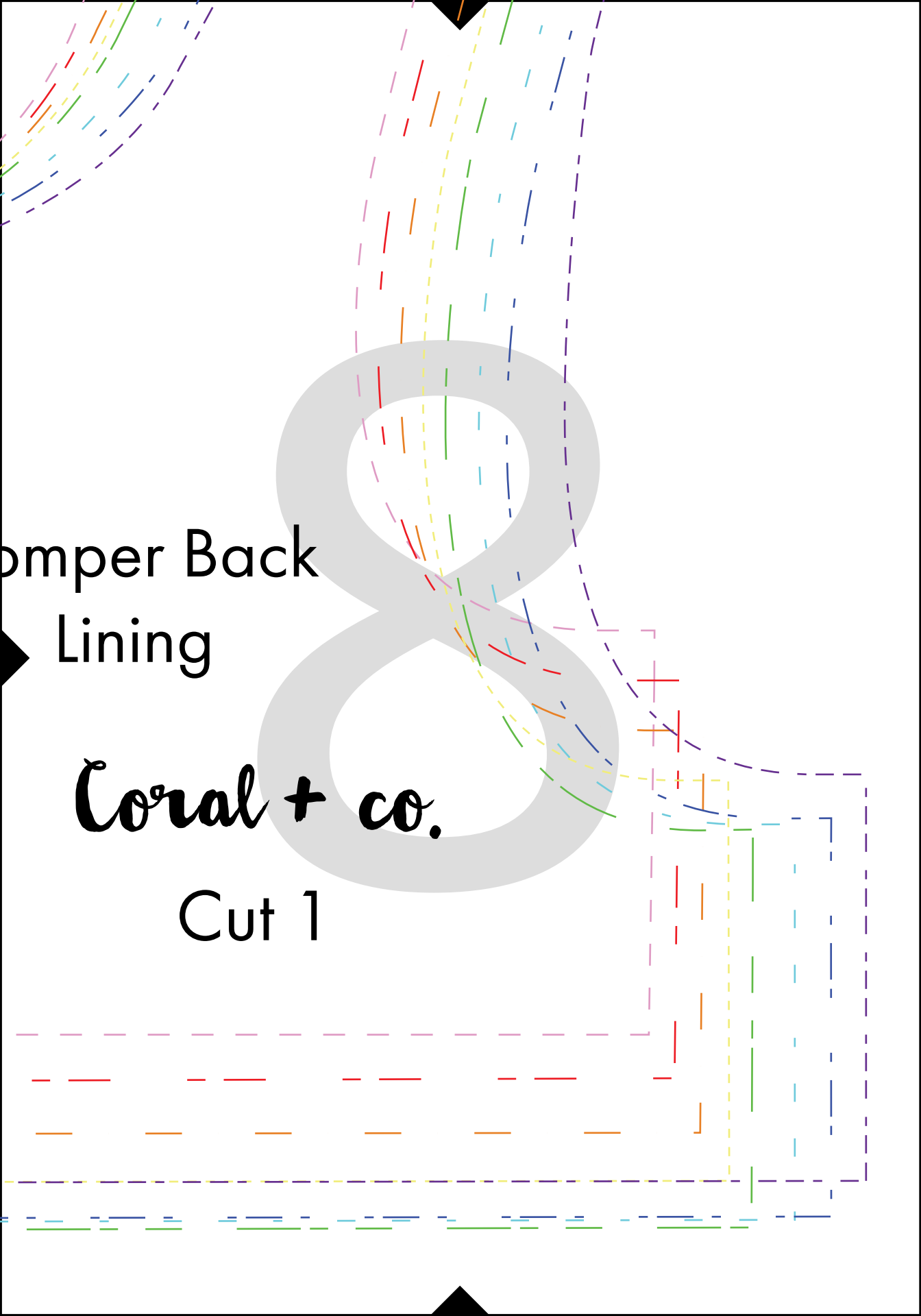
Re



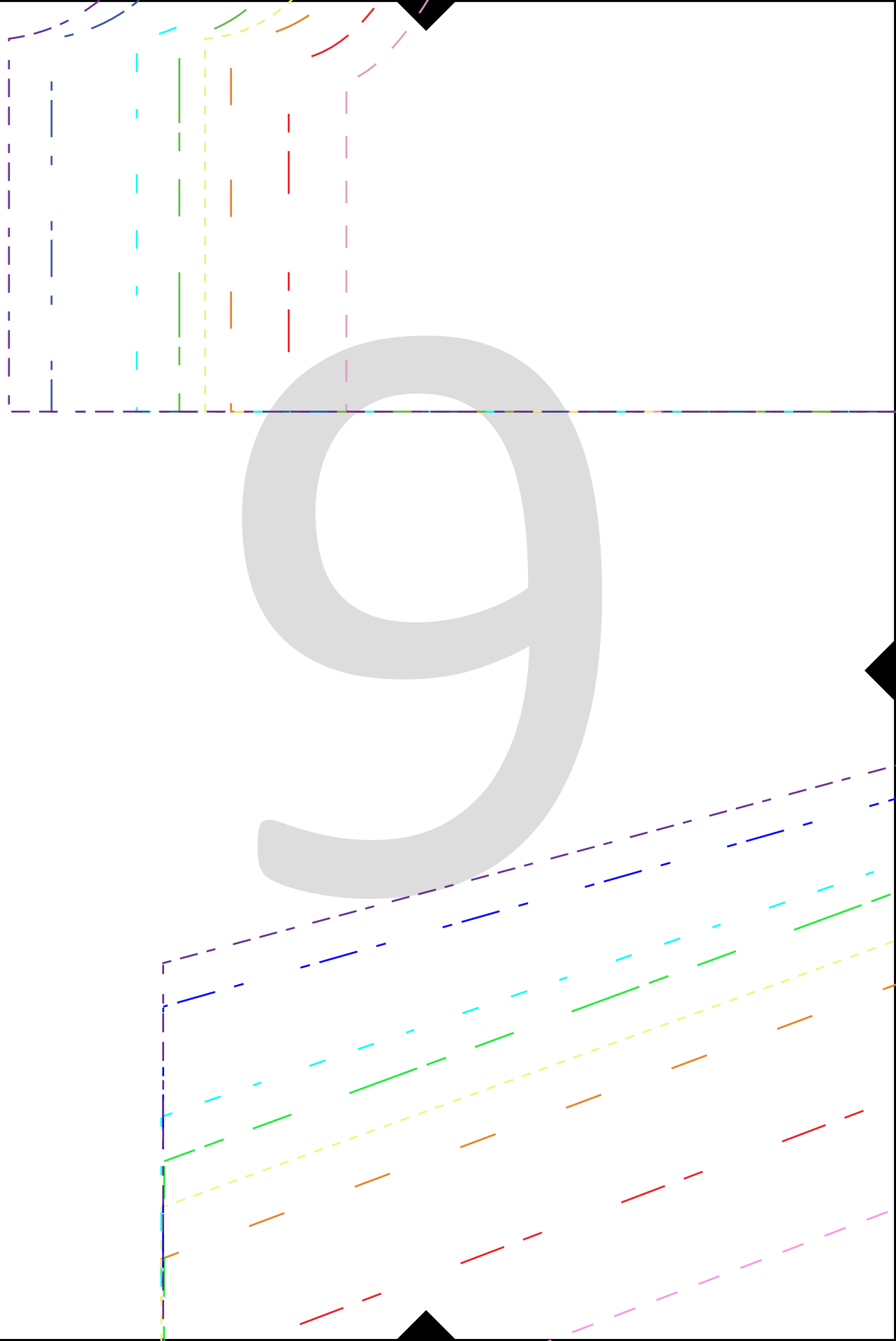
► Pomper Back
Lining

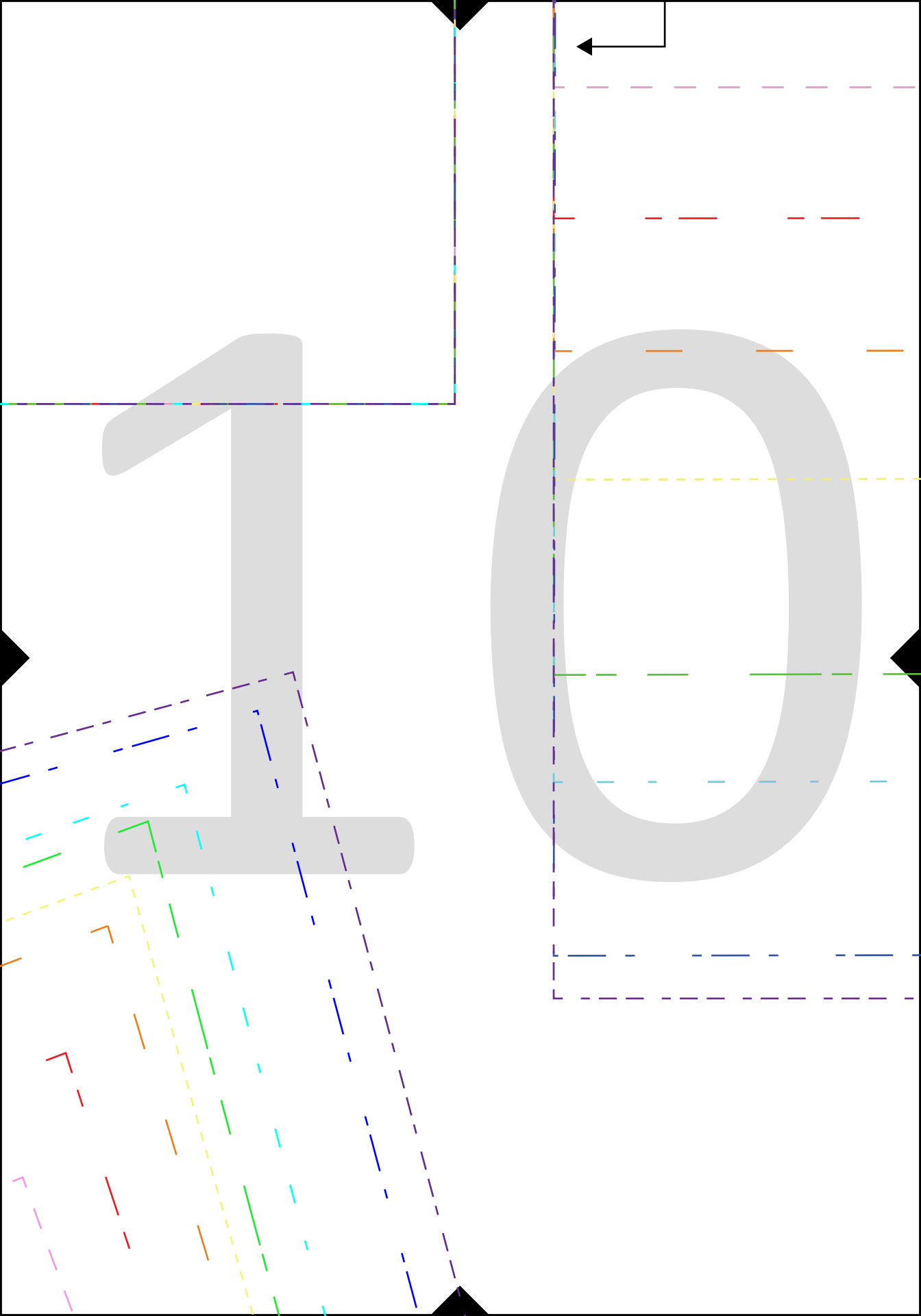
Coral + co.

Cut 1



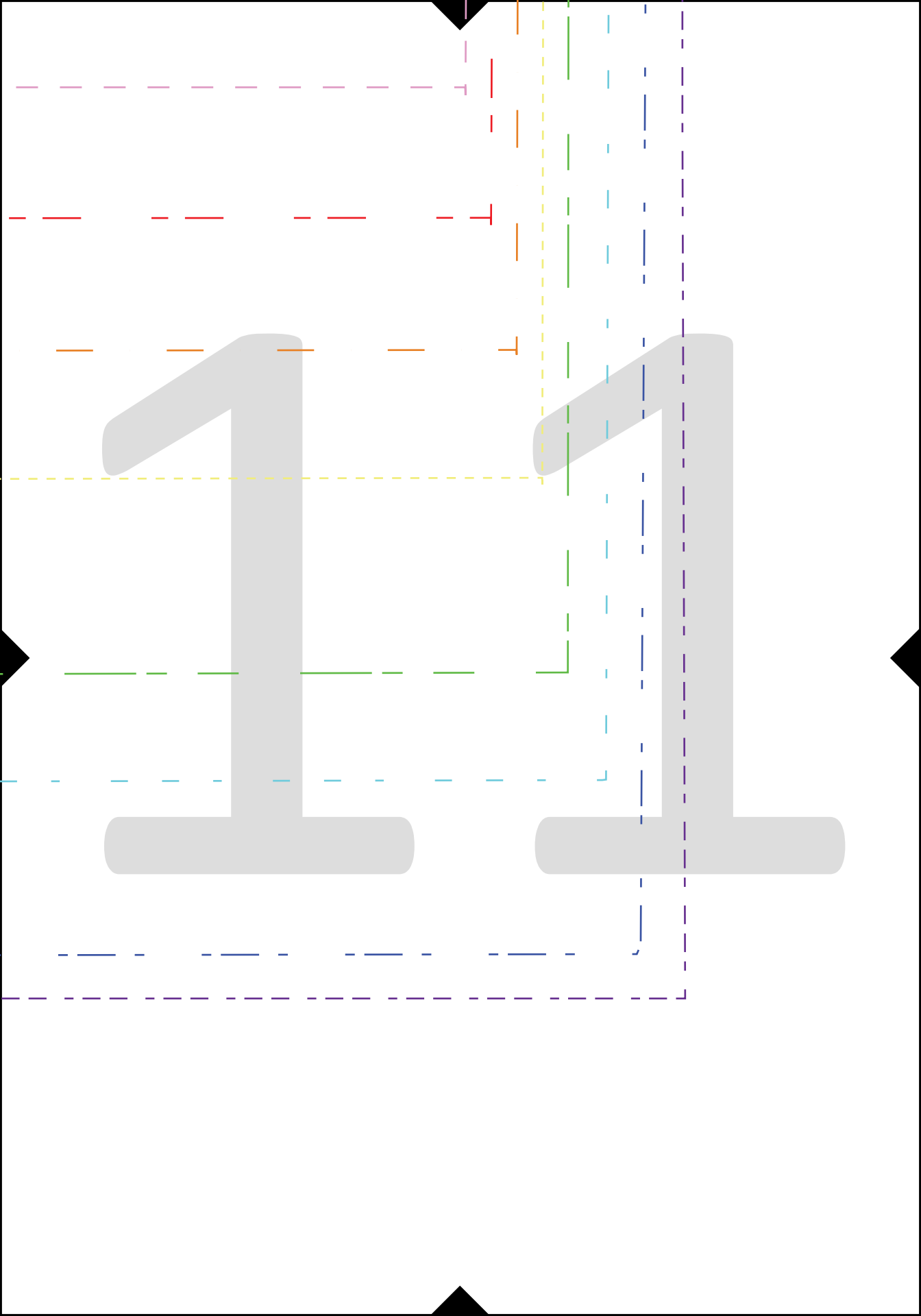
9



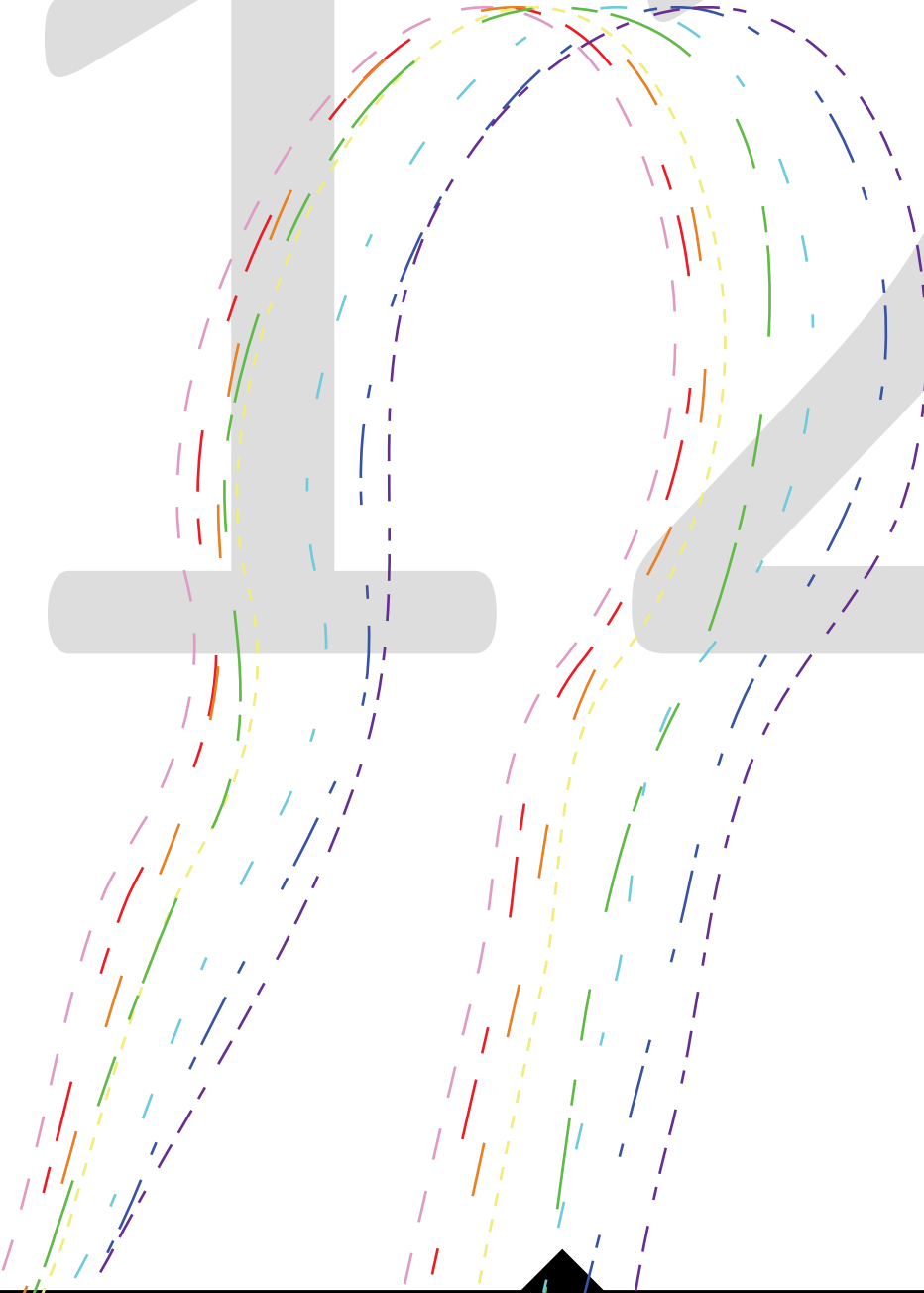


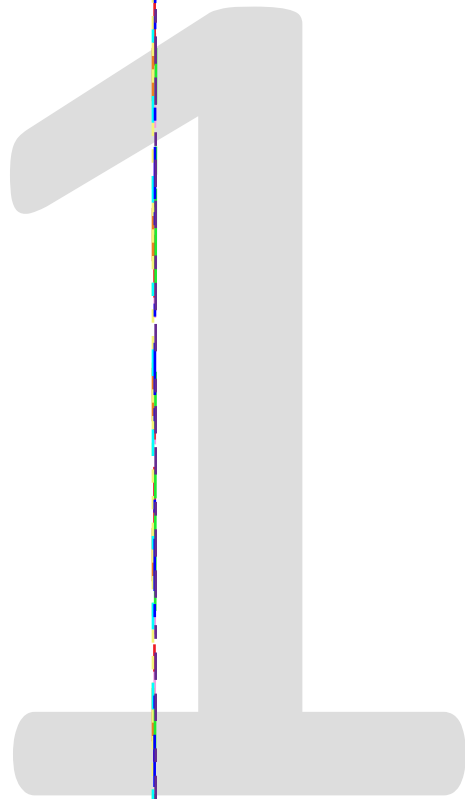
1

0



12





1

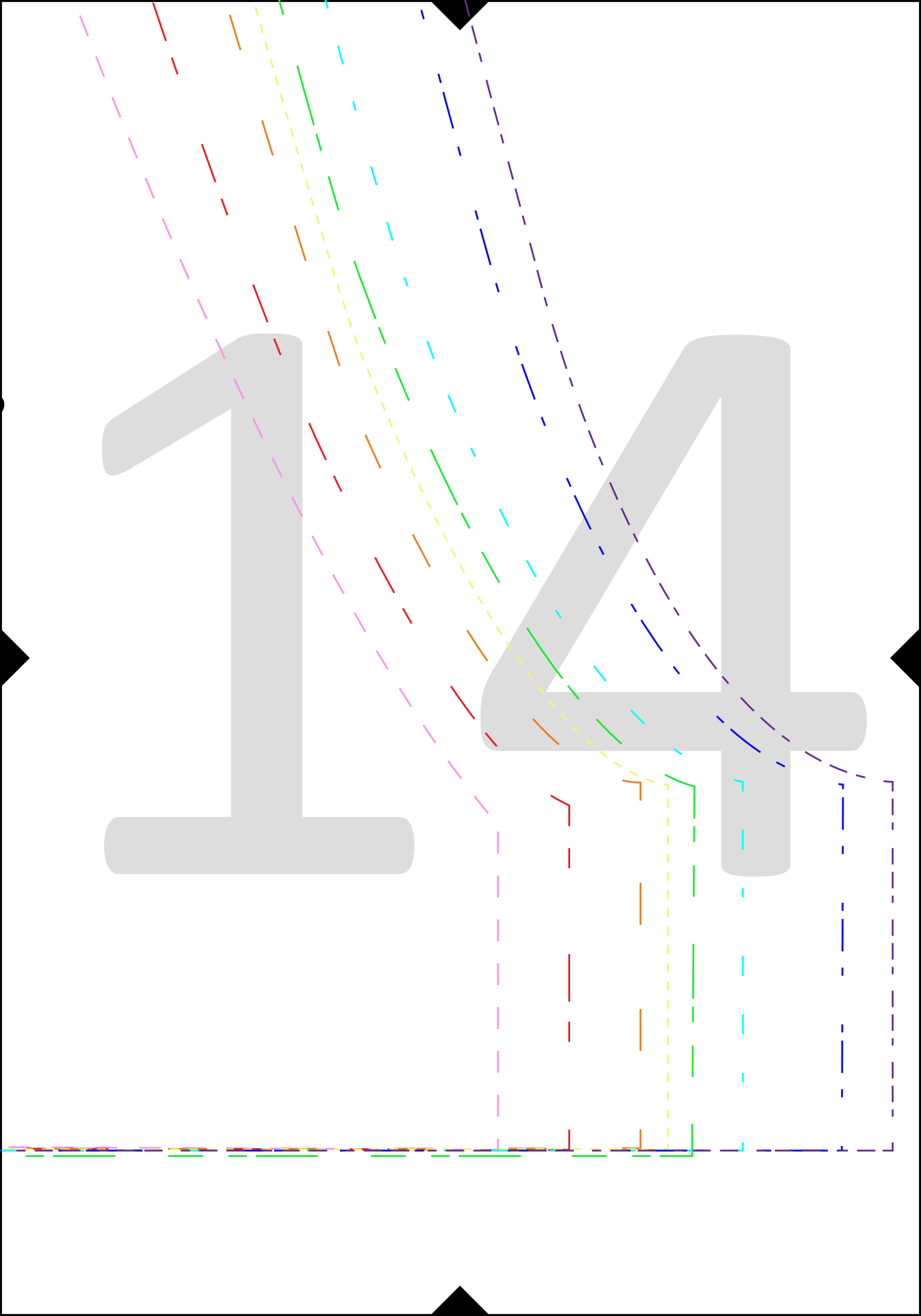


Romper Shorts
Back

Coral + co.

Cut 2

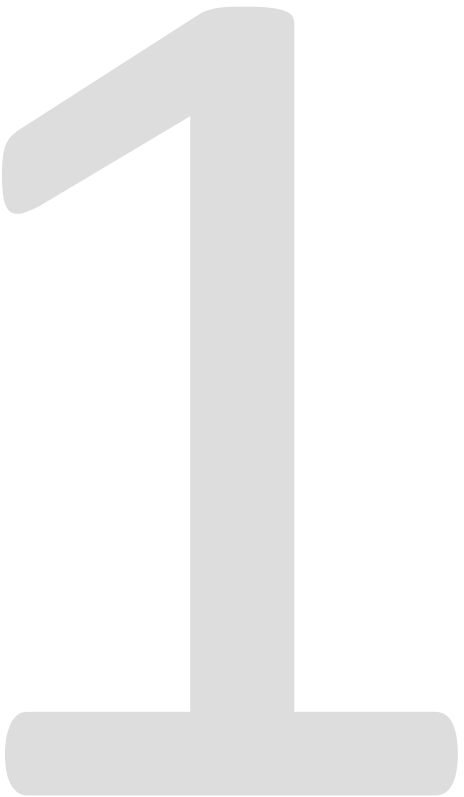
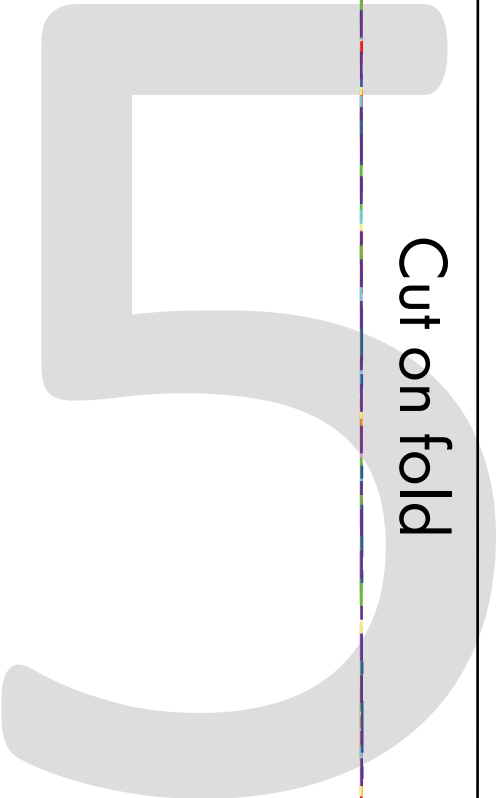
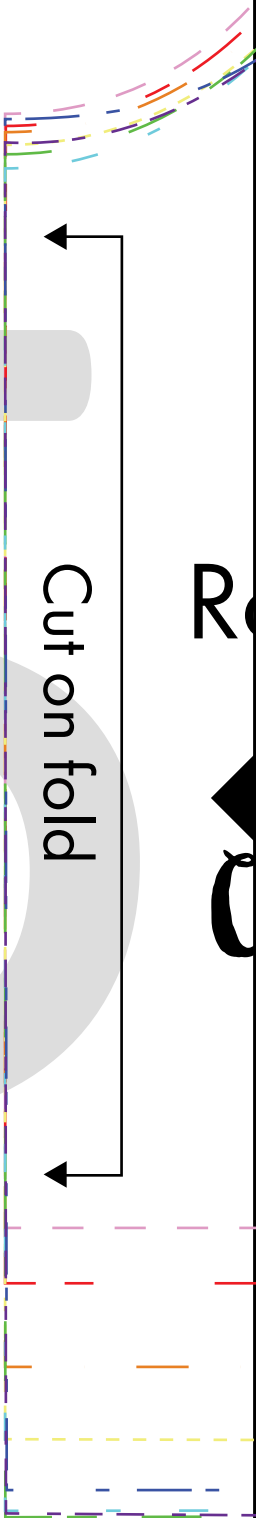
14



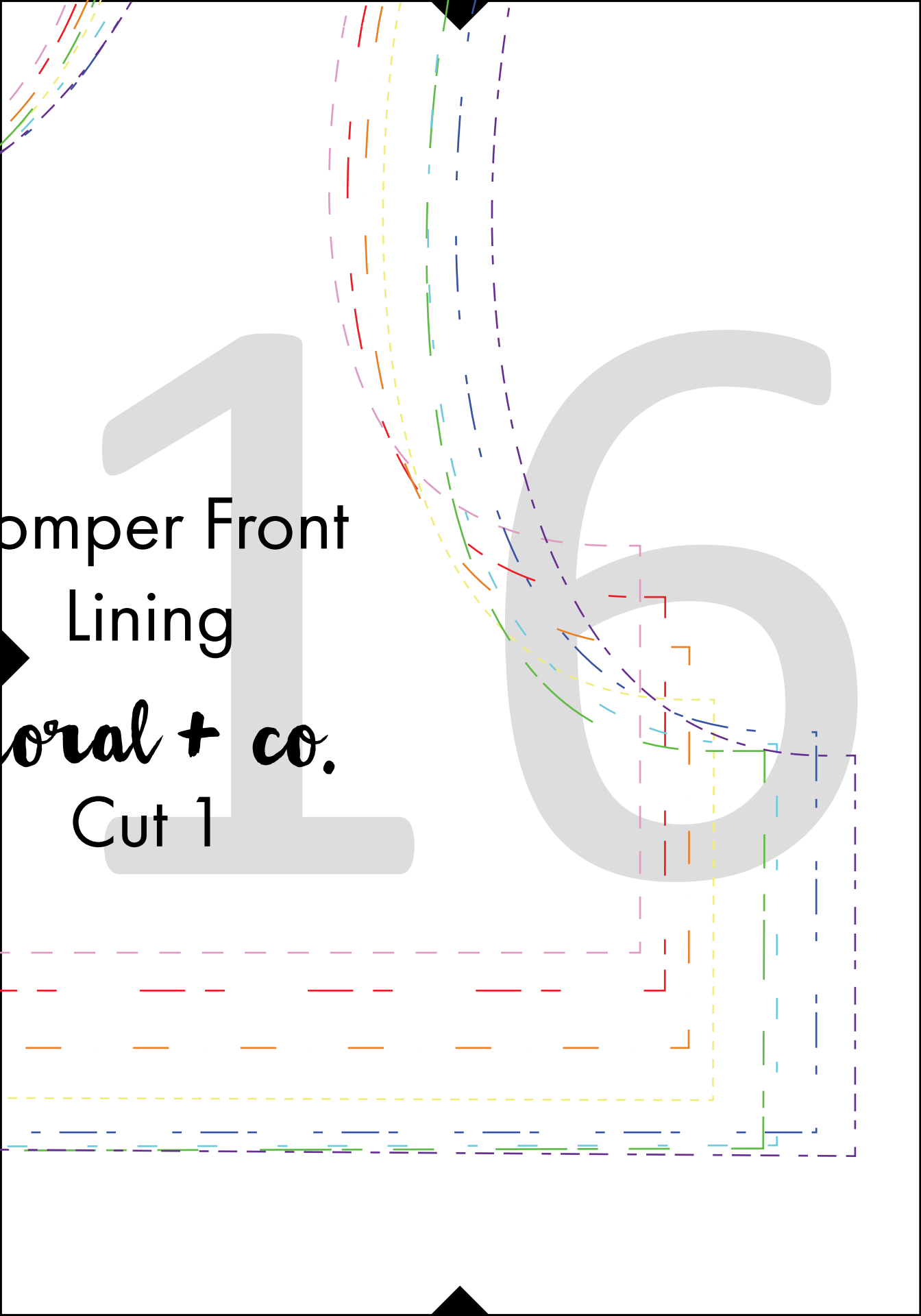
R

C

Cut on fold



16
Pomper Front
Lining
Moral + co.
Cut 1



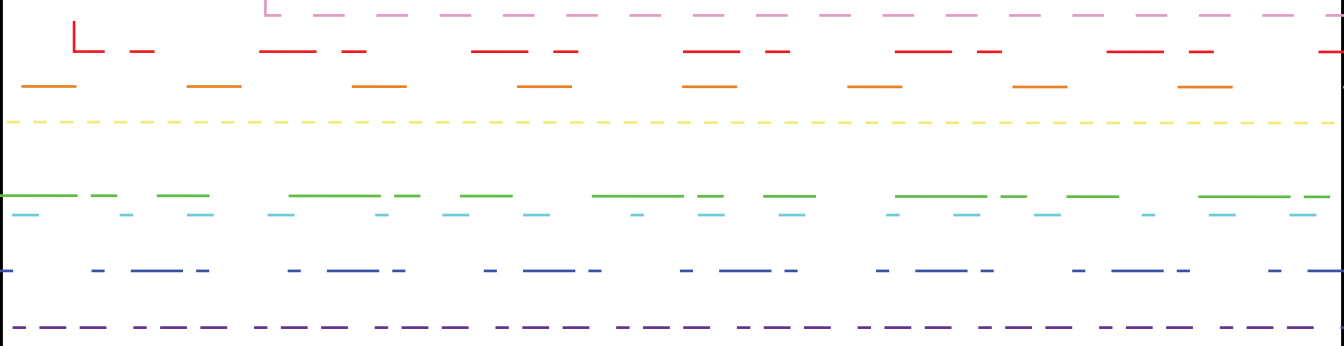
1

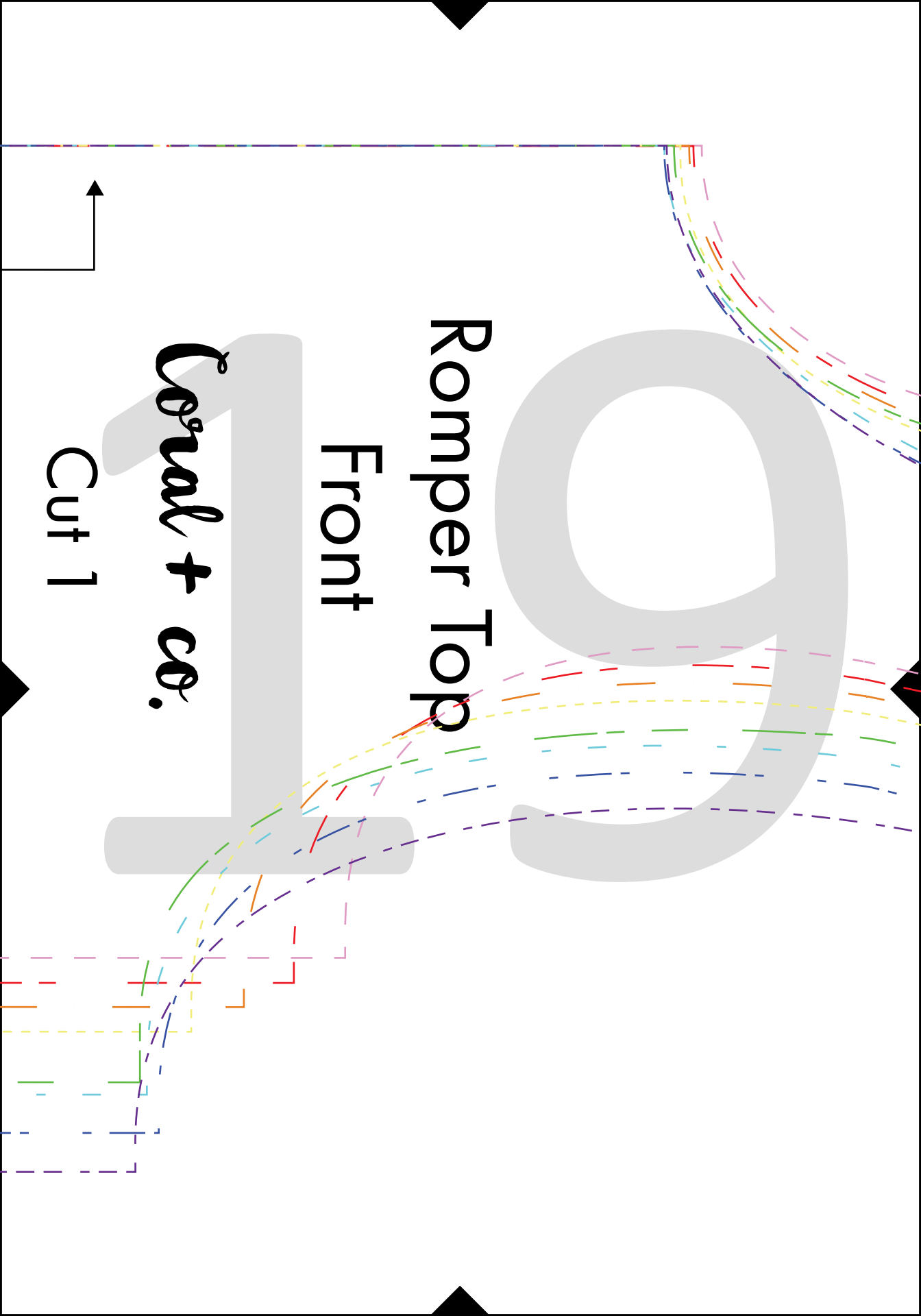
7



Cut on fold

18





Romper Top

Front

Corval + co.

Cut 1



