



Rack-a-lye Bundle

Rock-a-bye Bundle



Easy to sew baby essentials pattern that includes pieces for:
Small Baby Bib
Large Baby/Toddler Bib
Contoured Burp Cloth
Car Seat Strap Covers

Suggested Fabrics: Cuddle Minky, Chenille, Fleece, Medium Weight Woven Cottons.
Notions: Thread, 3/4" Velcro

***The Rock-a-bye Bundle includes extra tips to help sew with Cuddle Minky



So Tweet Patterns



This pattern is for private use only. The images, layout, design and other aspects of this pattern are copyright © So Tweet Patterns 2014. If you wish to make and sell items from this pattern, please contact us for terms.

Otherwise, no part of this design or pattern may be reproduced in any form.

So Tweet Patterns
www.sotweet.com

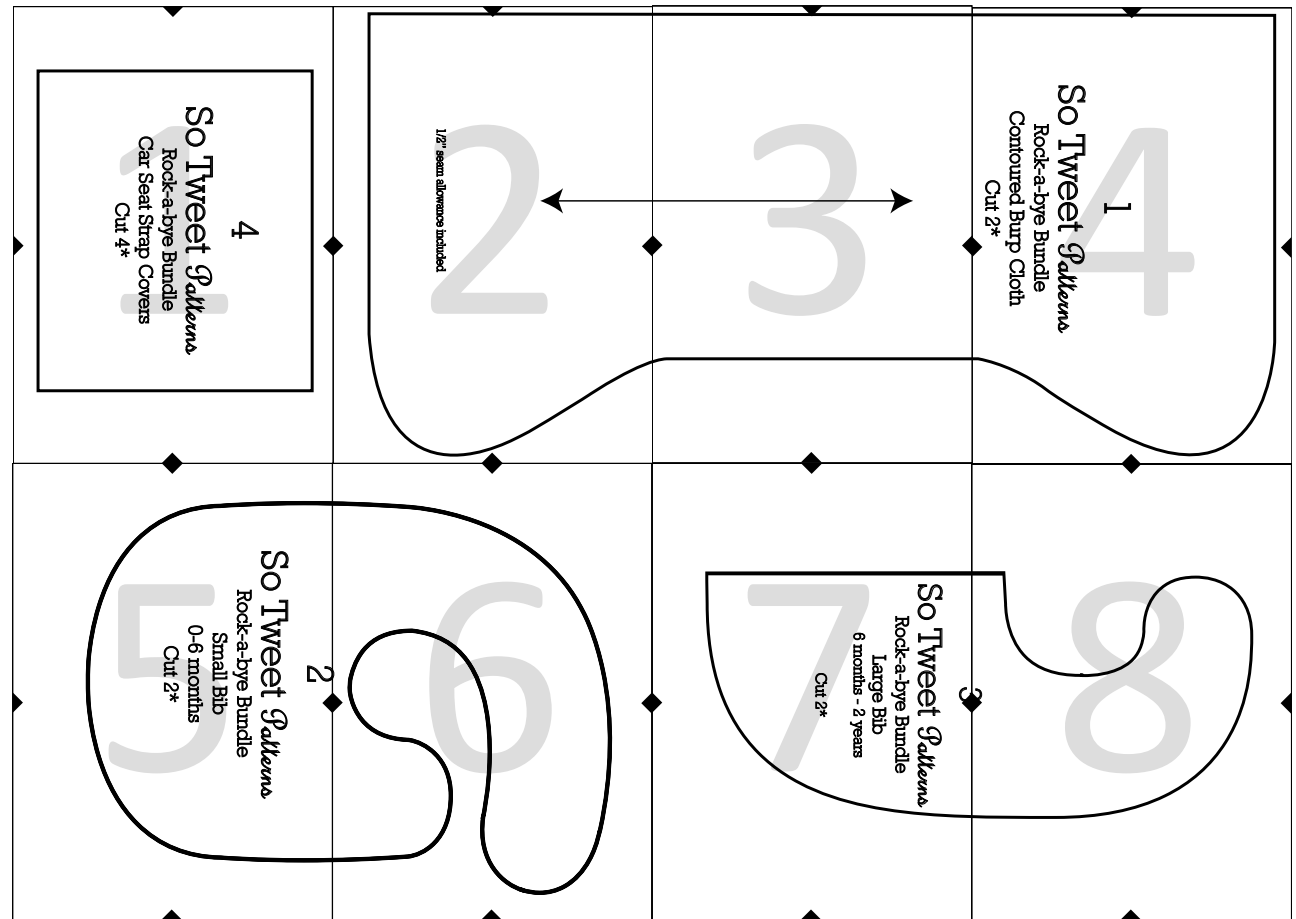
Shelly Morgan
email: www.sotweet@gmail.com
blog: gigglesandbeans.com



So Tweet Patterns
discussion forums
For answers to sewing questions,
visit the facebook group:
So Tweet Patterns

Printing Guide

1. Download the pdf file to your computer and open using Adobe Reader (free software available at Adobe.com).
2. This file contains 8 pattern sheets. Set your printer settings to "Actual Size" and/or "No Scaling" and print sheets on standard 8.5" x 11" or A4 paper.
3. Trim or fold sheets along the outside box with triangle notches on it.
4. Match the sheets according to this diagram along the triangle notches.
5. You are ready to cut out desired pattern pieces.

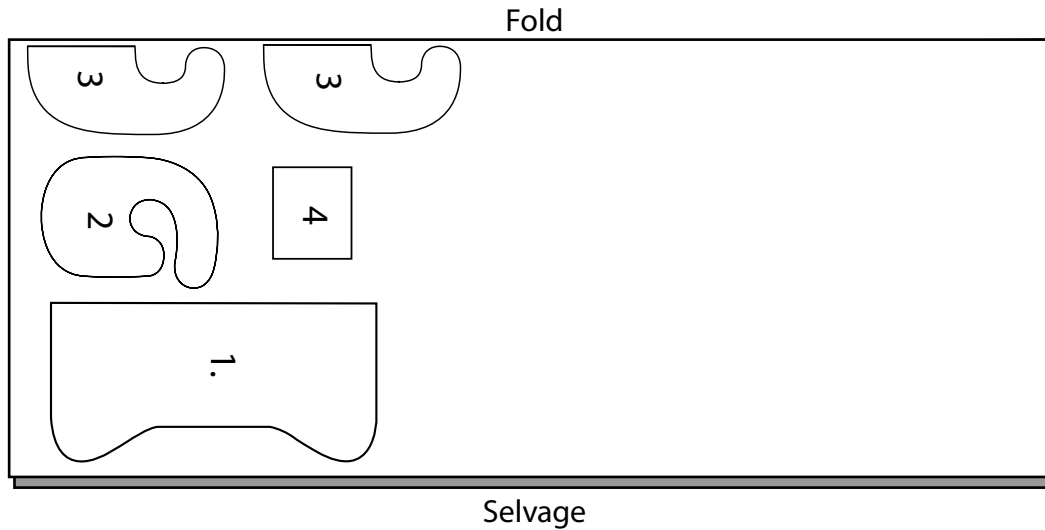


Minky Rectangle Chart

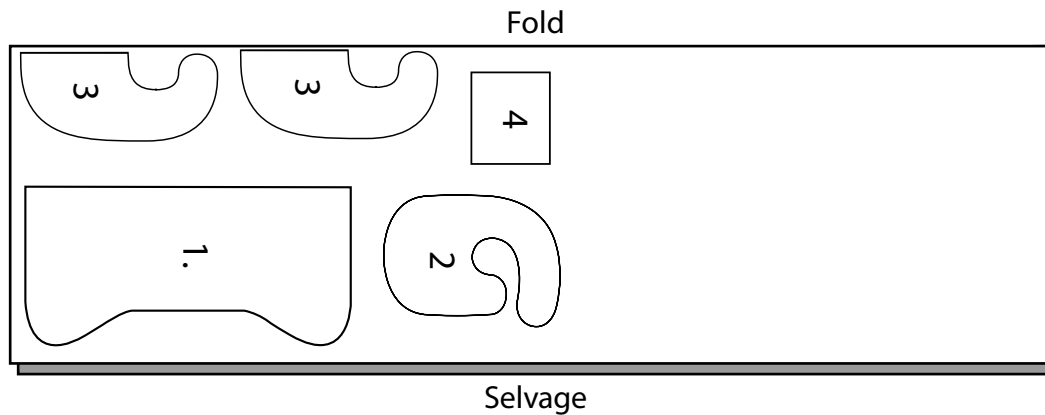
Burp Cloth	12" x 23"
Small Bib	12" x 15"
Large Bib	15" x 15"
Strap Covers	10" x 9" (2x)

*If using minky on the back of the pattern piece, use this guide for the fabric rectangle for each corresponding piece.

60"/150cm



44"/115cm



**Number of Pattern Pieces to Cut*

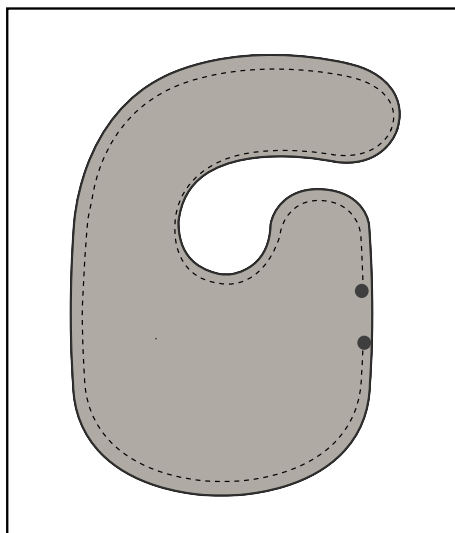
Fabric type on Back	Number of pieces to cut
<i>Cotton Backing</i>	
Burp Cloth	2
Small Bib	2
Large Bib	2
Strap Covers	4
<i>Minky Backing</i>	
Burp Cloth	1
Small Bib	1
Large Bib	1
Strap Covers	1

Fabric Requirements

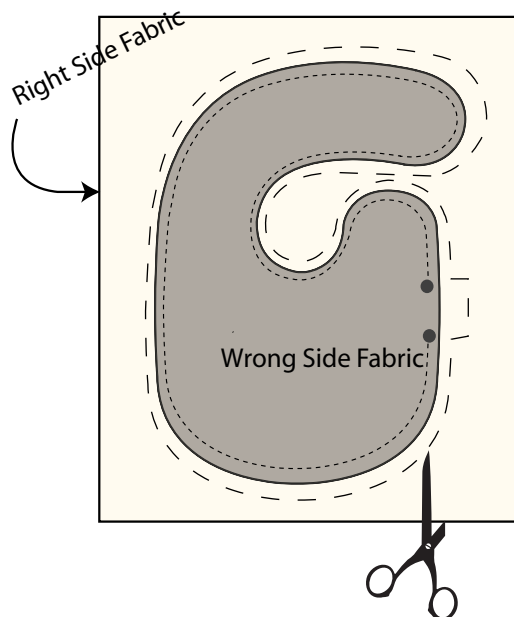
Fabric Width	Fabric Required
44" Wide	1/2 Yard
60" Wide	3/4 Yard

Baby Bib
Newborn - 6 months

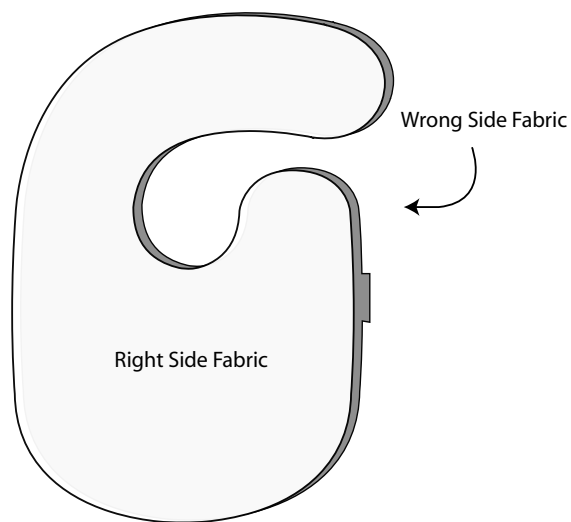
Step 1 Place Baby Bib pattern piece over fabric rectangle (or pattern piece) with wrong sides of fabric facing. Stitch around edges using a 1/2" seam. Stop two inches from starting place leaving an opening.



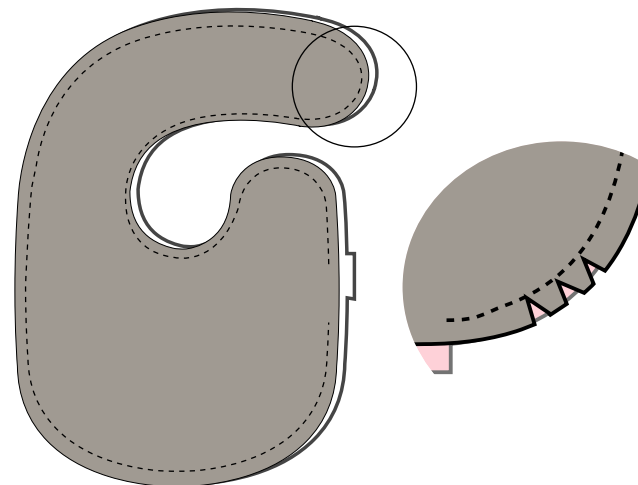
Step 2 Cut bib shape from fabric rectangle using the the top layer as a cutting guide. Cut 1/2" wide where opening is located.
Note: This step is for minky fabric, if using cotton only skip to step 3.



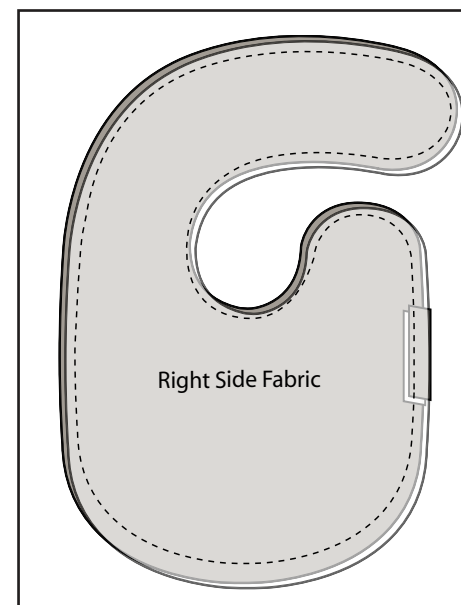
Step 3 Turn bib right side out. A small flap should extend.



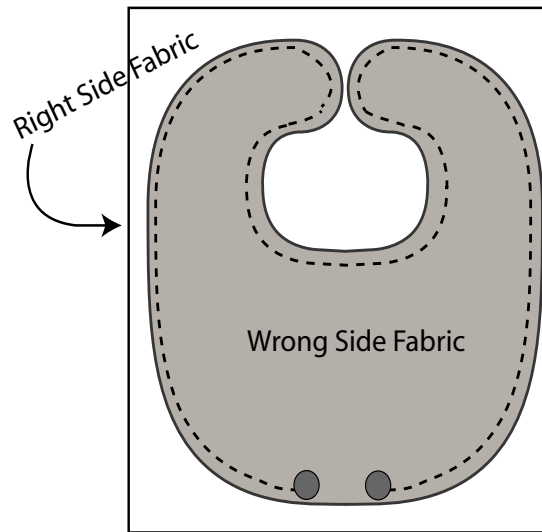
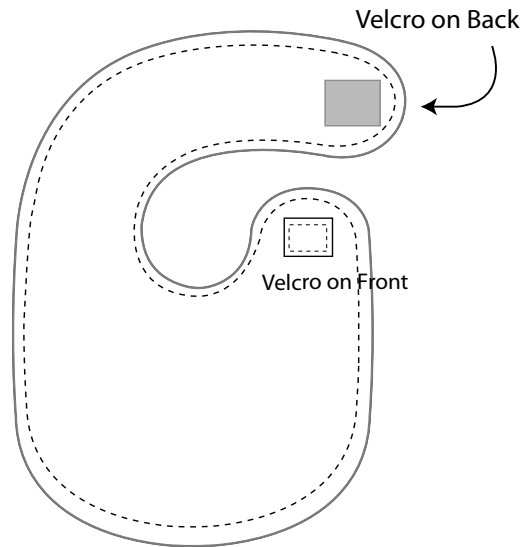
Step 4: Clip edges around curves.



Step 5: Tuck flap in and pin. Topstitch 1/4" from outside edge of bib.

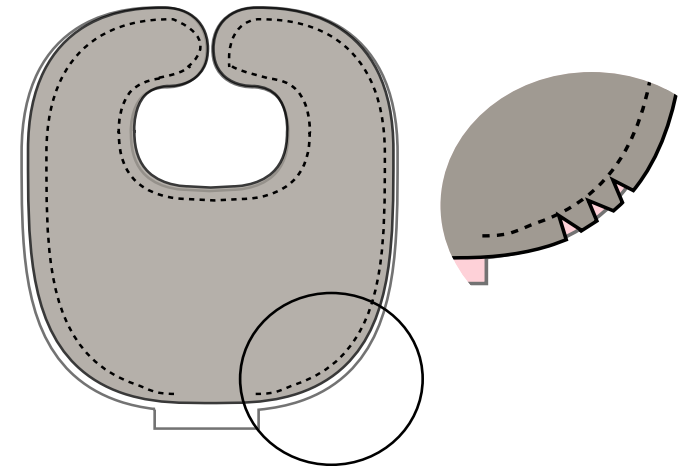


Step 5: Place 1" rectangle of velcro on bib and stitch 1/16" from edge on front and back.

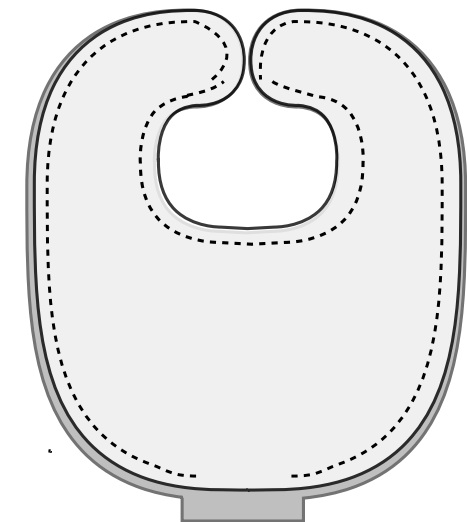


Step 2: Cut bib shape from fabric rectangle using the the top layer as a cutting guide. Cut 1/2" wide where opening is located.

Step 3: Clip edges around curves.

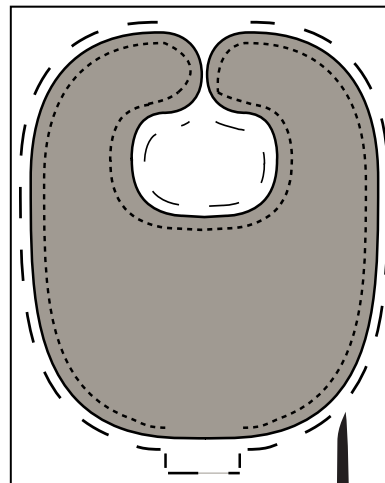


Step 4: Turn bib right side out. A small flap should extend.



Large/Toddler Bib
6 months - 2 years

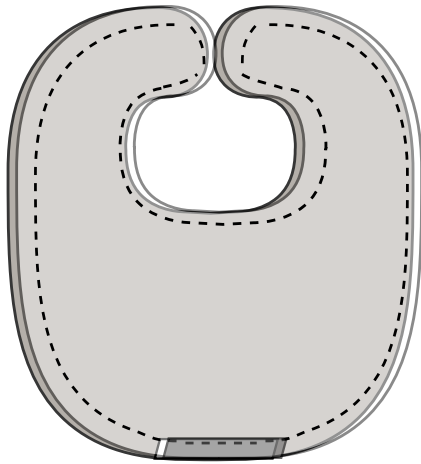
Step 1: Place Large Bib pattern piece over fabric rectangle (or pattern piece) with wrong sides of fabric facing. Stitch around edges using a 1/2" seam. Stop two inches from starting place leaving and opening.



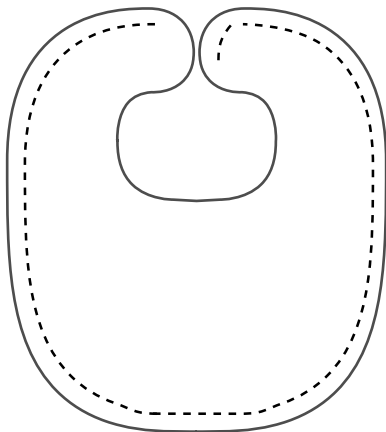
Note: This step is for minky fabric, if using cotton only skip to step 3.



Step 5: Tuck flap in and pin. Topstitch 1/4" from outside edge of bib.

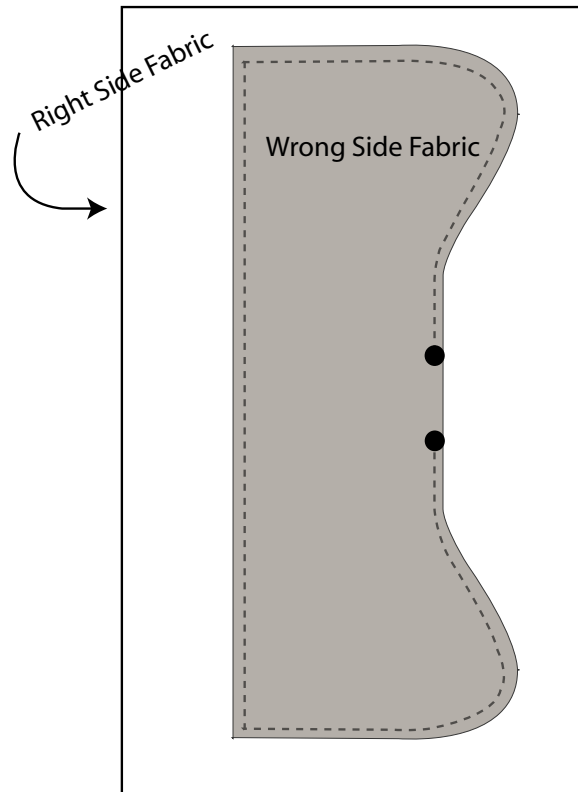


Step 6: Place 1" rectangle of velcro on bib and stitch 1/16" from edge on front and back.

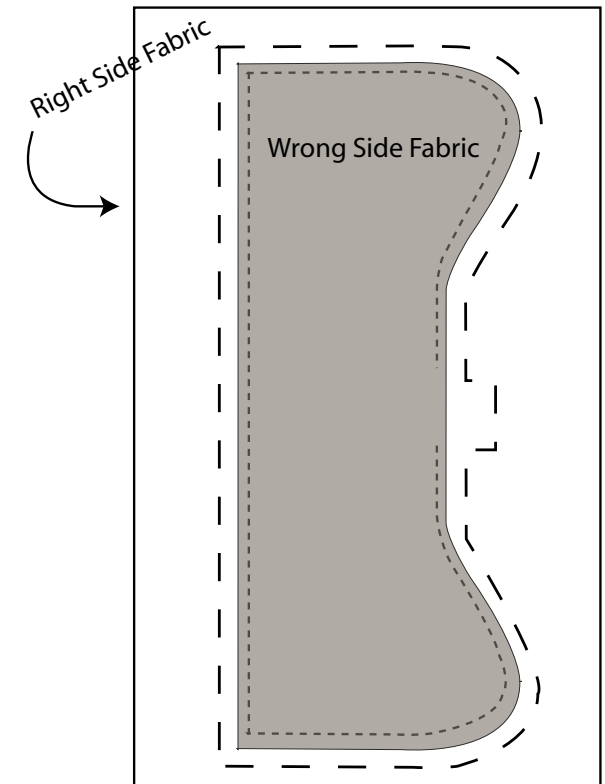


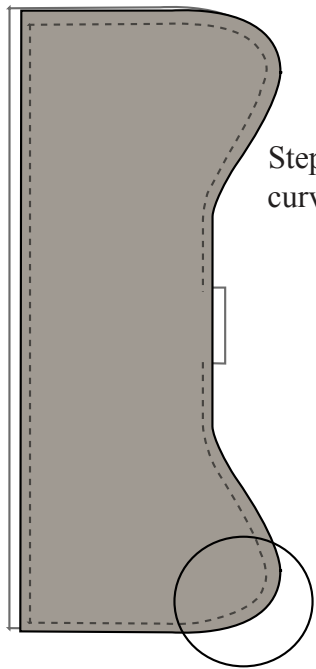
Contoured Burp Cloth

Step 1: Place Burp Cloth pattern piece over fabric rectangle (or pattern piece) with wrong sides of fabric facing. Stitch around edges using a 1/2" seam. Stop two inches from starting place leaving and opening.

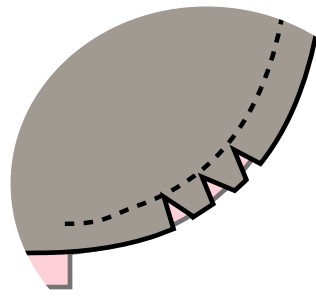


Step 2: Cut burp cloth shape from fabric rectangle using the the top layer as a cutting guide. Cut 1/2" wide where opening is located. Note: This step is for minky fabric, if using cotton only skip to step 3.

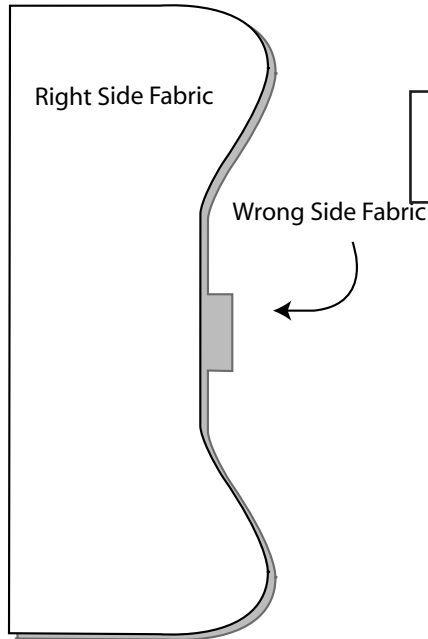




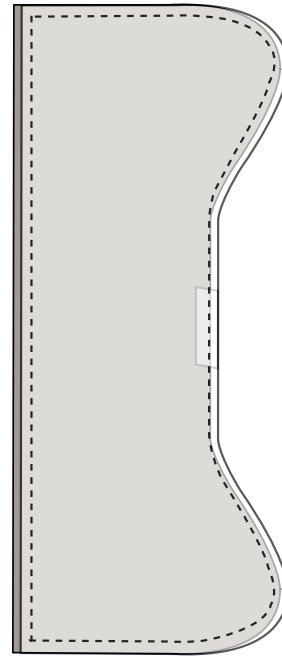
Step 3: Clip edges around curves.



Step 4: Turn burp cloth right side out. A small flap should extend.

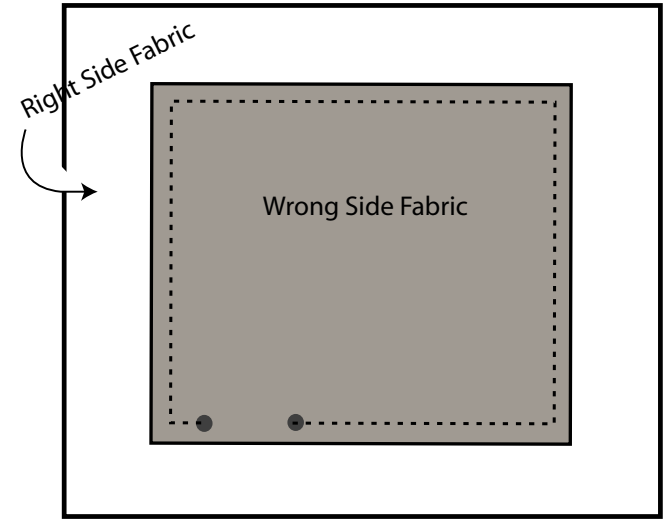


Step 5: Tuck flap in and pin. Topstitch 1/4" from outside edge of burp cloth.

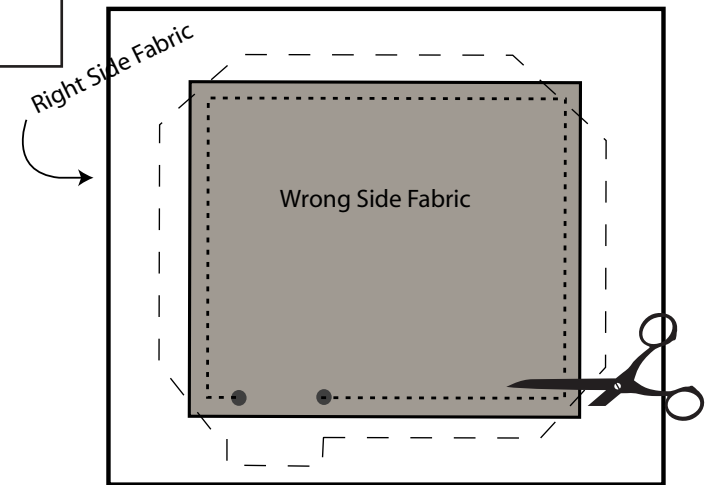


Car Seat Strap Covers

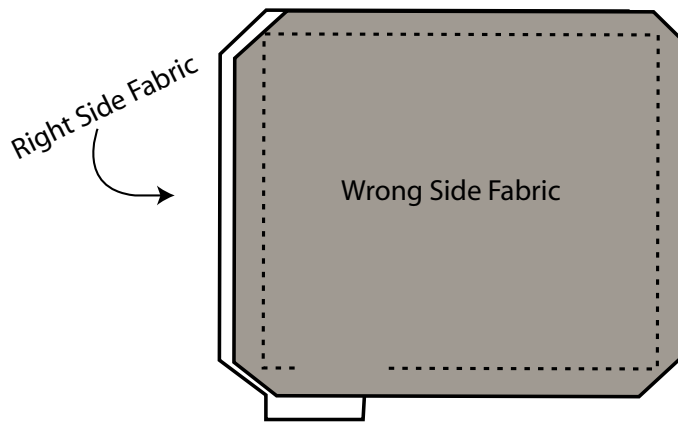
Step 1: Place Strap Cover pattern piece over fabric rectangle (or pattern piece) with wrong sides of fabric facing. Stitch around edges using a 1/2" seam. Stop two inches from starting place leaving and opening.



Step 2: Cut the strap covers shape from fabric rectangle using the the top layer as a cutting guide. Cut 1/2" wide where opening is located. Note: This step is for minky fabric, if using cotton only skip to step 3.

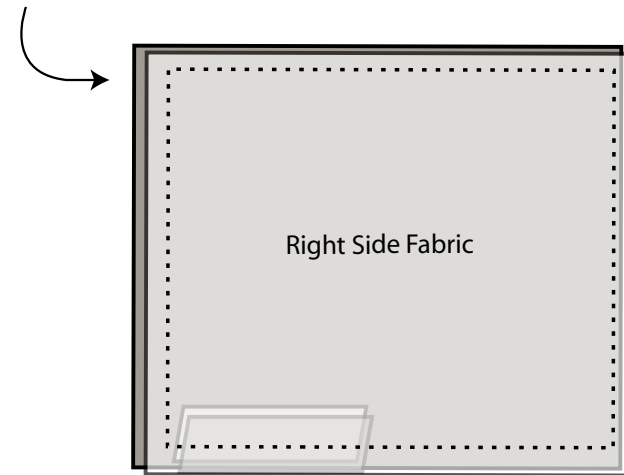


Step 3: Clip the corners of the strap covers.



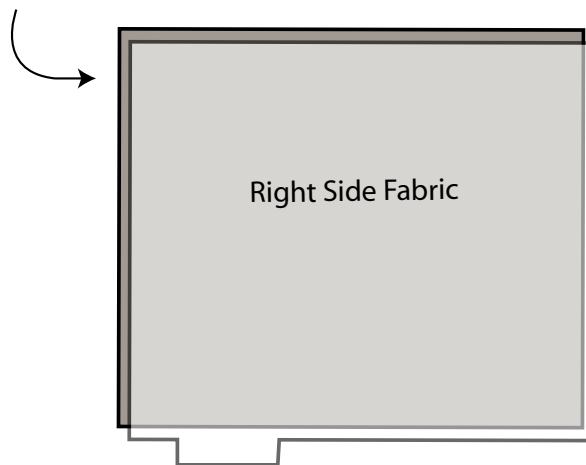
Step 5: Tuck flap in and pin. Topstitch 1/4" from outside edge of strap covers

Wrong Side Fabric



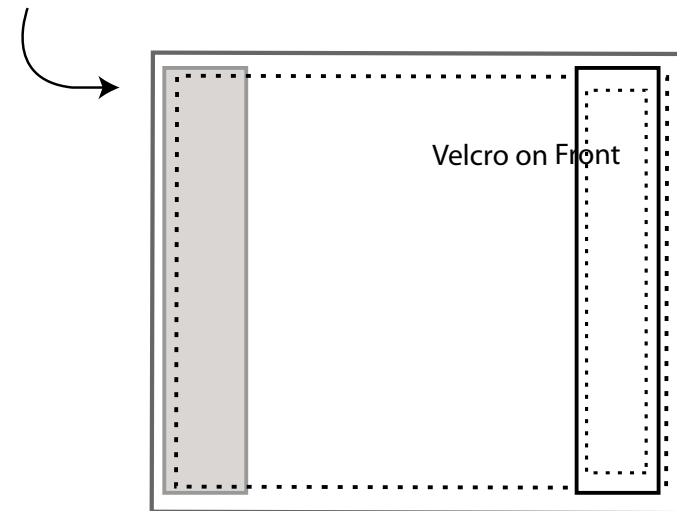
Step 4: Turn square right side out. A small flap should extend.

Wrong Side Fabric



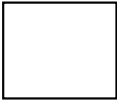

Step 6: Place a 5" rectangle of velcro on the both the front and back on and stitch 1/16" from edge.

Velcro on Back





Key

	Right side of fabric.	Stitch
	Wrong side of fabric.	-----	Cutting Line

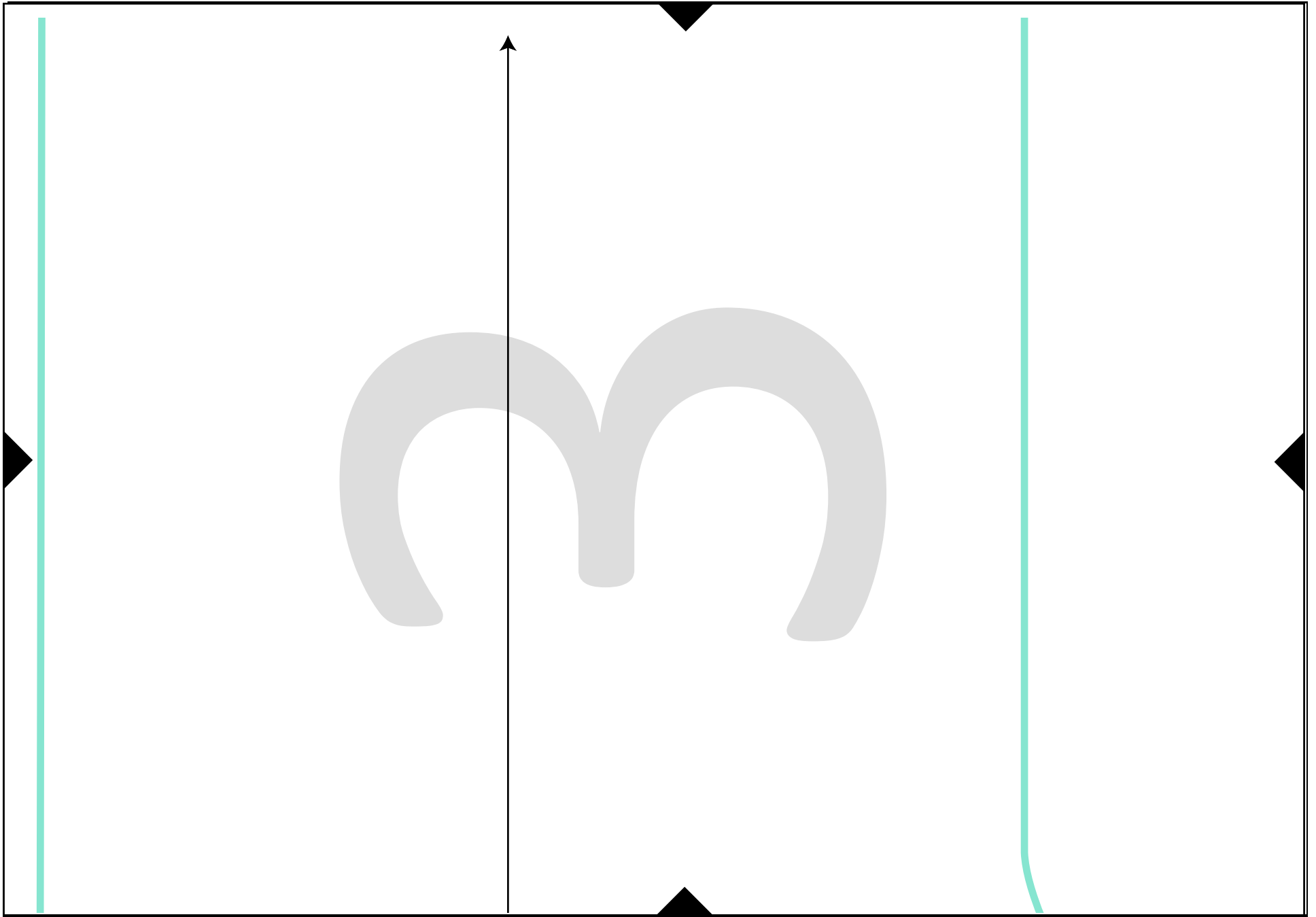


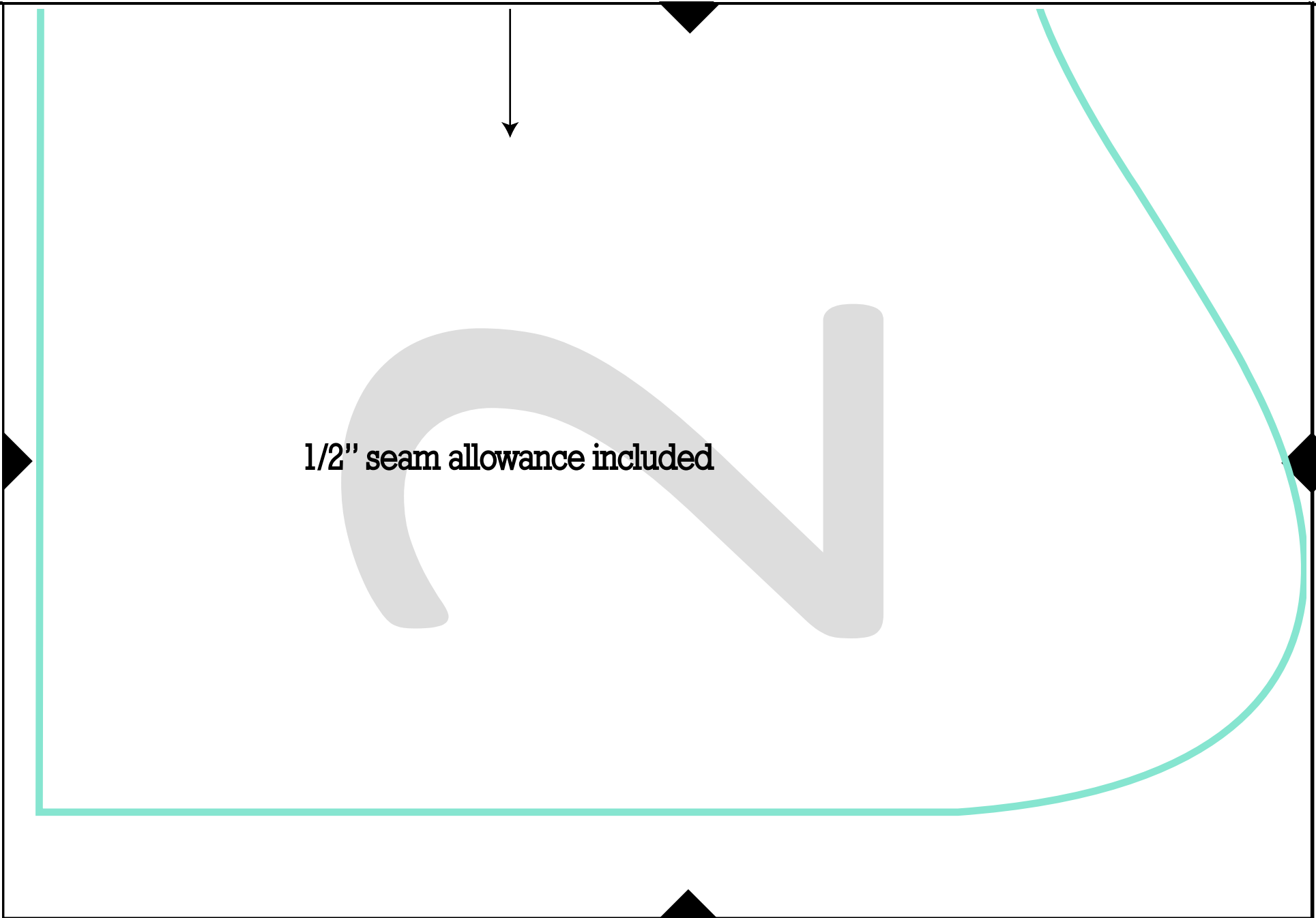
So Tweet Patterns

Rock-a-bye Bundle

Contoured Burp Cloth

Cut 2*







1/2" seam allowance included

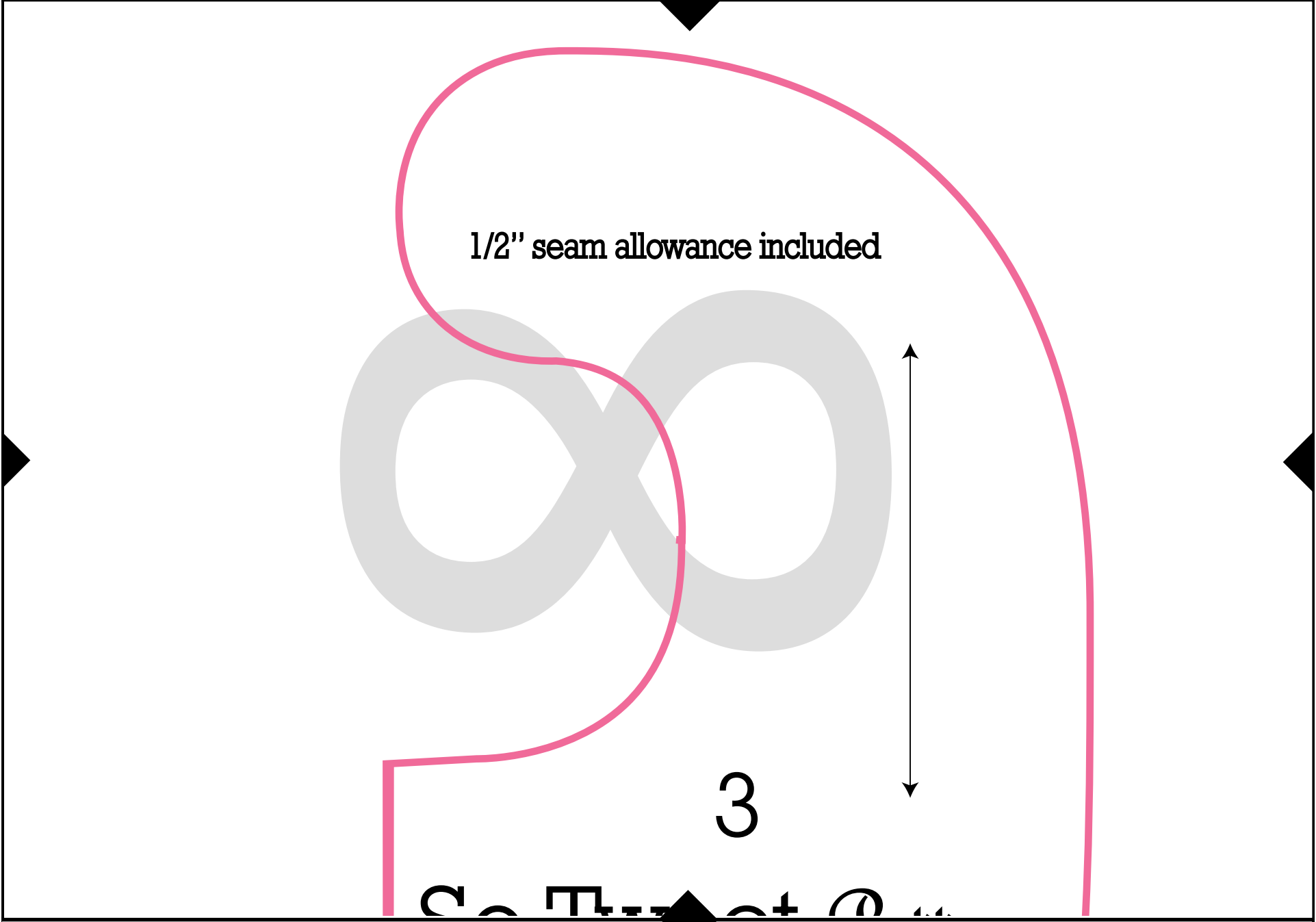
4

So Tweet Patterns

Rock-a-bye Bundle

Car Seat Strap Covers

Cut 4*



1/2" seam allowance included

3

SO TWEET Patterns

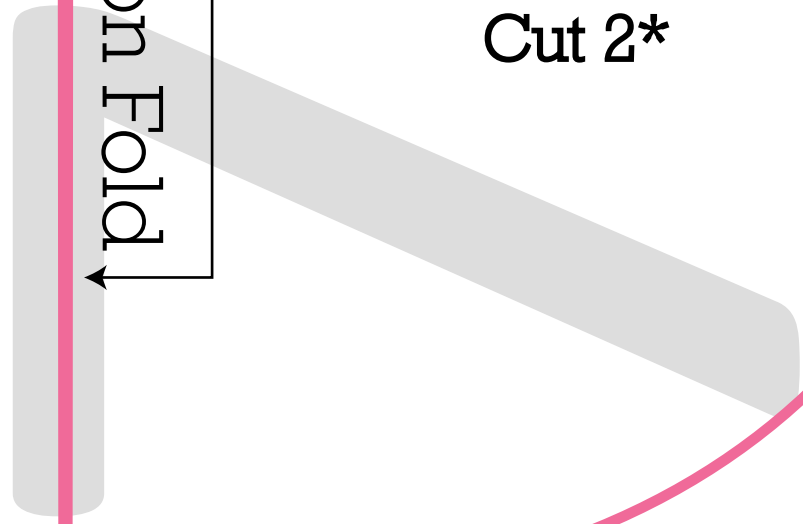
Rock-a-bye Bundle

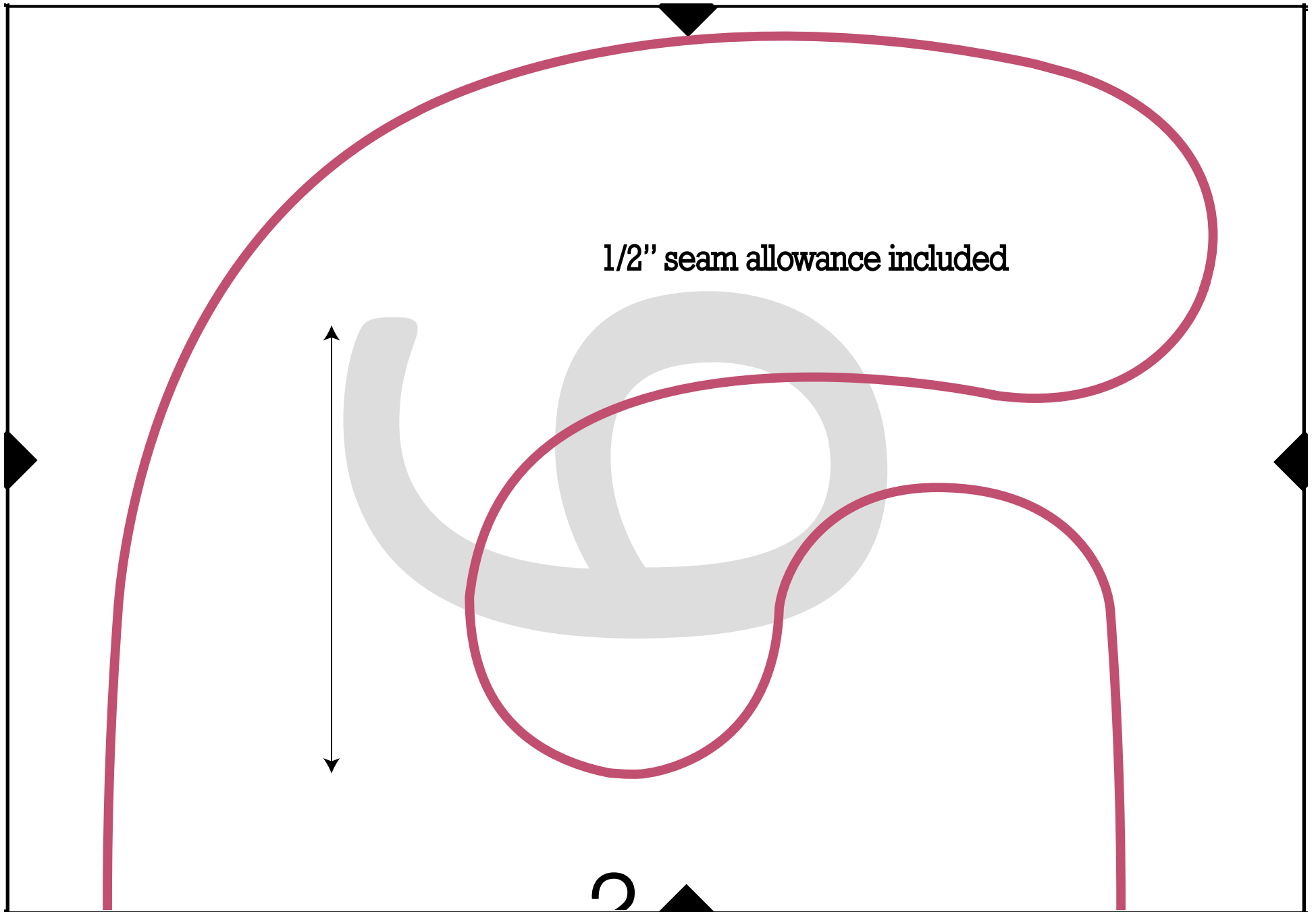
Large Bib

6 months - 2 years

Cut 2*

Place on Fold





1/2" seam allowance included



So Tweet Patterns

Rock-a-bye Bundle

Small Bib

0-6 months

Cut 2*